

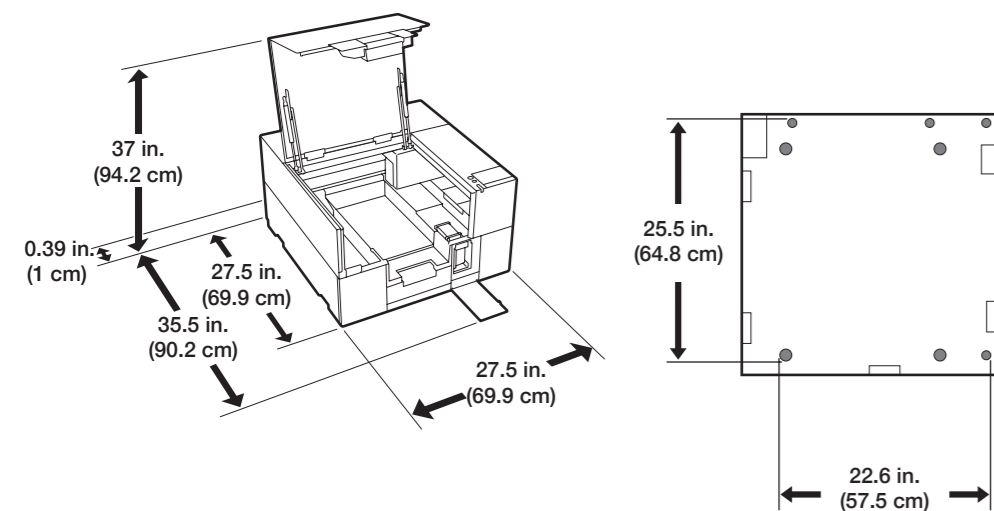
Start Here

IMPORTANT: Before using this product, make sure you read these instructions and the safety instructions in the online *User's Guide*.

Choose a Location for the Printer

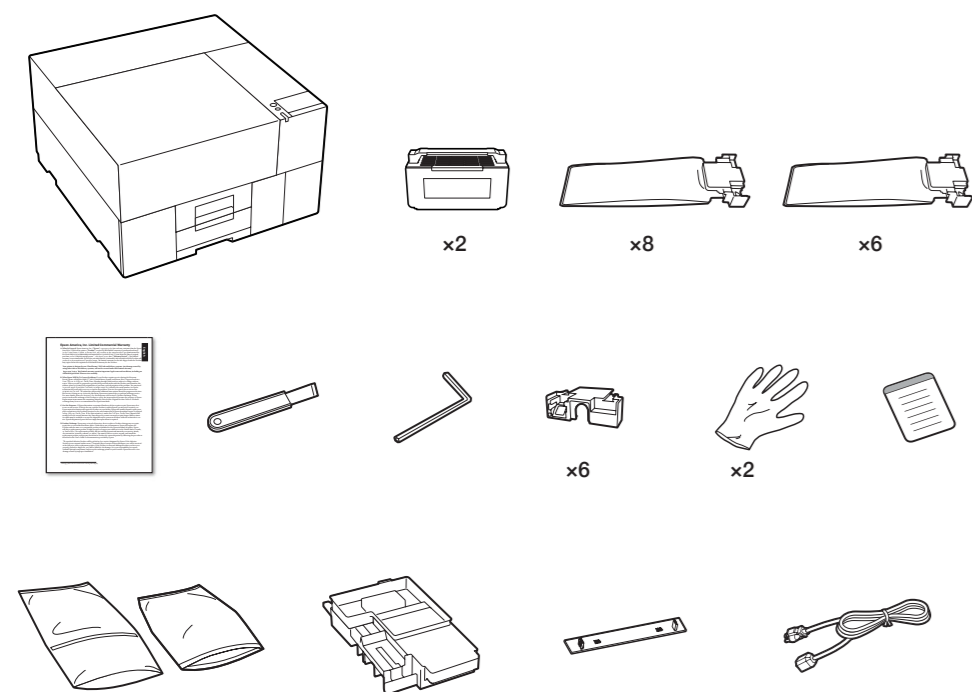
Choose a location for the printer that is near a dedicated electrical outlet, in a well ventilated area, and has a temperature of 59 to 86 °F (15 to 30 °C) and a humidity of 20 to 80%. To maintain humidity levels, avoid places exposed to direct sunlight, airflow from air conditioners, and heat sources.

Make sure to place the printer on a flat, stable surface capable of supporting approximately 220 lb (100 kg) and with enough space on all sides (see illustrations below). The surface supporting the printer should be wider than the space between the rubber feet on the bottom of the printer, between 23.6 to 31.5 in. (60 to 80 cm) off the ground, and at least 27.6 in. (70 cm) in depth.



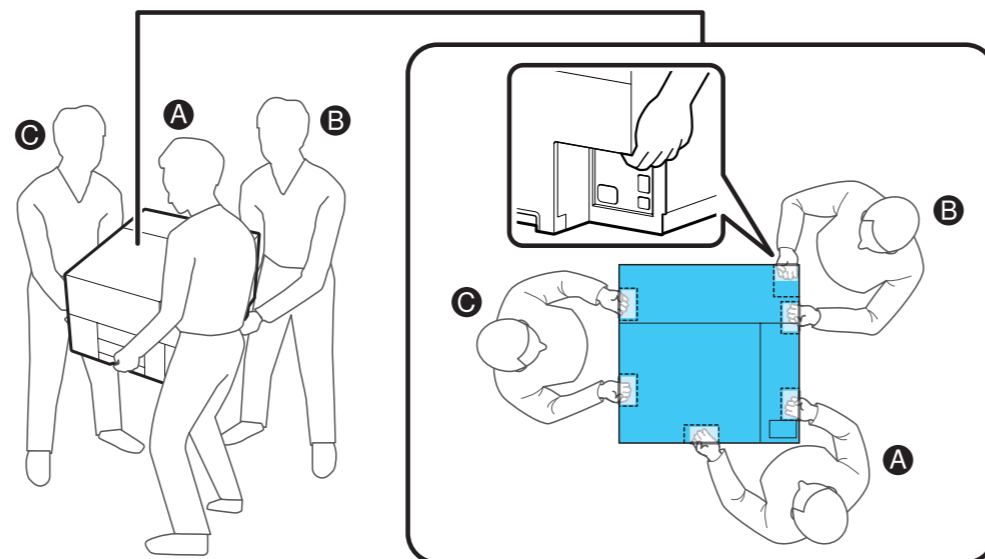
Unpack and Place Printer

1 Make sure you have these items:



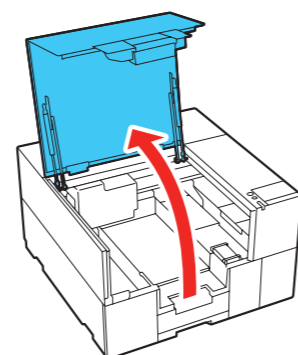
2 Remove all the packaging materials and tape. Check carefully for all the tape inside and outside the printer.

WARNING: The printer requires three people to lift and move it. When lifting, be sure to place your hands at the points shown in the illustrations below. All three people should lift simultaneously to avoid tilting the printer and trapping their hands.



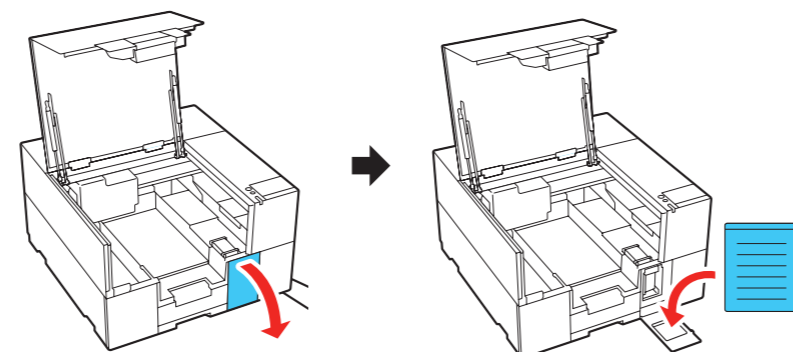
3 Open the printer cover.

WARNING: Be careful not to trap your hands or fingers when opening or closing the printer cover.

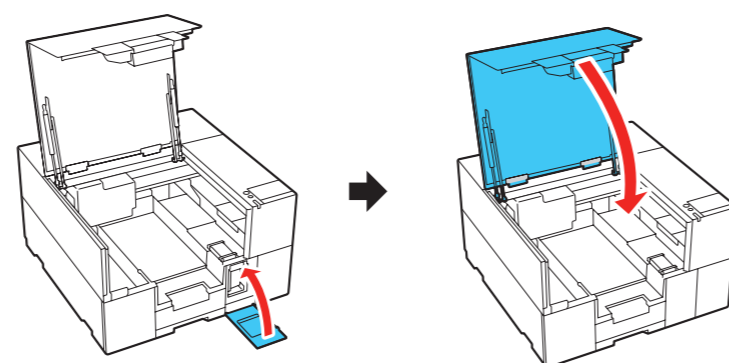


4 Remove the transportation supports. Refer to the instruction sheet inside the printer for details.

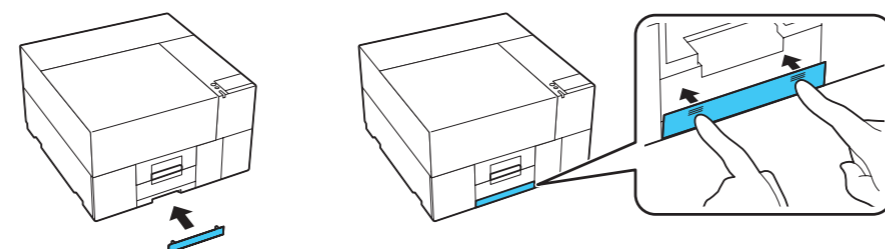
5 Open the maintenance cover and place the caution label for your language over the English label, if necessary.



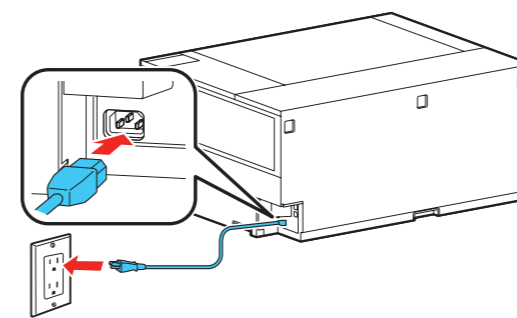
6 Close the maintenance cover, then close the printer cover.



7 Attach the handle cover.



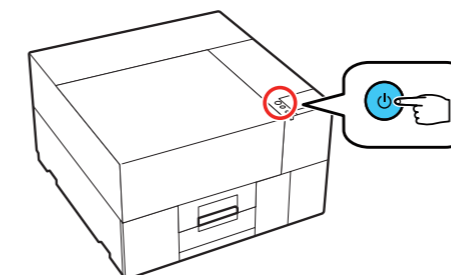
8 Connect the power cord to the back of the printer and plug the other end into an outlet.



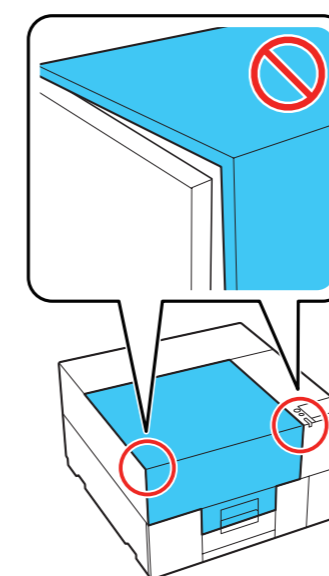
Note: Do not connect the printer to your computer yet.

Turn On and Configure

1 Press the power button on the control panel to turn on the printer.



Note: If an error message appears, check the edges around the printer cover to make sure the cover is properly seated; otherwise printing is not possible.



2 Select the language, date, and time settings on the touchscreen.

Note: You can change these settings later using the product's control panel. For more information, see the online *User's Guide*.

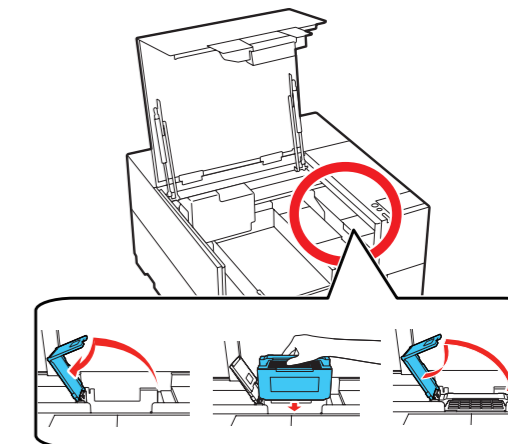
Installing the Air Filters and Ink Supply Units (Ink Packs)

Follow the instructions in this section and on the printer's touchscreen to install the air filters, flush the ink system, and install the ink.

Note: You must complete these steps in one session (approximately 90 minutes). If you don't have time to complete the process, press **Turn the power off** and return later to start again.

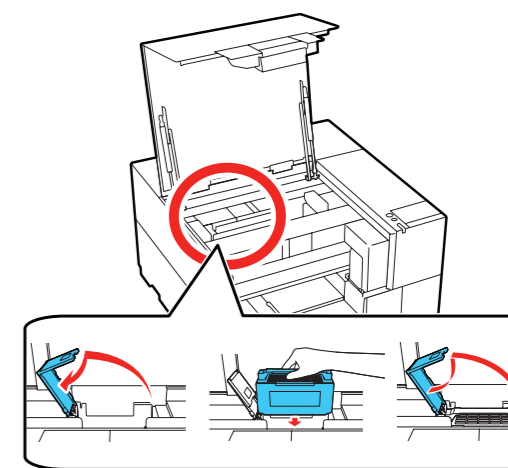
Caution: Keep ink packs out of the reach of children, and do not drink the ink. Wear safety goggles, gloves, mask, protective clothing, and other protective equipment when charging ink.

1 Install the front air filter: Press **How To** and follow the instructions on the touchscreen. When finished, press **Done**.

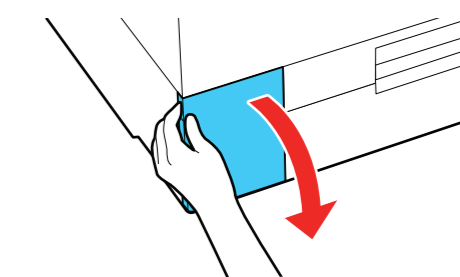


2 Remove the protective material: Wait for the gantry to move forward, then follow the instructions on the touchscreen. When finished, press **Complete**.

3 Install the rear air filter: Press **How To** and follow the instructions on the touchscreen. When finished, press **Done**.



4 Install the cleaning ink supply units: Press **How To** and follow the instructions on the touchscreen.



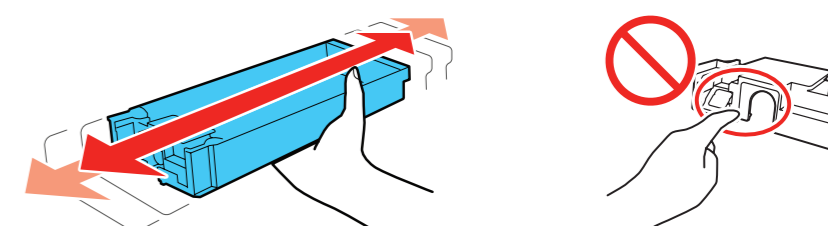
5 Position the ink charging tool: Press **How To** and follow the instructions on the touchscreen. Press **Yes** to start flushing the ink tubes.

Note: Do not use a used ink charging tool, otherwise ink may leak.

6 Install the tray attachments: Press **How To** and follow the instructions on the touchscreen. When finished, press **OK**.

Note: After removing the tray attachments, keep them for long term storage and future ink charging.

7 Install the ink packs: Press **How To** and follow the ink shaking instructions. When finished, press **OK**.



Note:

- Do not shake the varnish ink pack.
- Do not touch the chip or port on the tray attachments.
- Do not touch the chip or port on the ink packs.

- 8 Repeat step 7 using the second white ink pack. When finished, press **OK**.
- 9 Lock the ink charging tool: Press **How To** and follow the instructions on the touchscreen. When finished, press **OK**.

Note: Make sure to hold the ink charging tool so it does not move.

- 10 Unlock the ink charging tool: Press **How To** and follow the instructions on the touchscreen. When finished, press **OK**.

Note: Make sure to hold the ink charging tool so it does not move.

- 11 Repeat steps 9 and 10.

- 12 Remove the ink charging tool: Press **How To** and follow the instructions on the touchscreen.

Note:

- Waste liquid from this product is classified as industrial waste. Process it in accordance with your local laws and regulations regarding disposal of industrial waste. Be sure to give any waste disposal contractors the *Safety Data Sheet*. You can find the ink Safety Data Sheet (SDS) documents at <http://epson.com/support/sds> (U.S.) or <http://epson.ca/support/sds> (Canada).
- Keep the ink charging tool. You can use it one more time to discharge ink if you need to transport or store the printer.

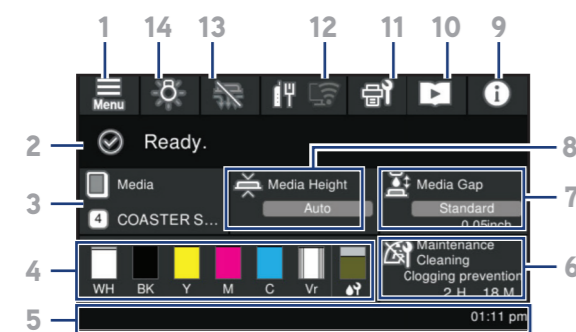
The ink charging process is now complete.

Install Software

Note: An internet connection is required to obtain the product software.

- 1 Download and run your product's software package. For the latest software and utilities, visit <http://epson.com/support/v1070> (U.S.), <http://epson.ca/support/v1070> (Canada), or <http://latin.epson.com/support/v1070> (Latin America).
- 2 Follow the instructions on the screen to run the setup program.

Using the Touchscreen



- | | |
|----|--|
| 1 | Accesses printer settings |
| 2 | Displays the printer's status messages |
| 3 | Displays the Media Settings menu |
| 4 | Shows the current ink and wiper unit levels |
| 5 | Shows the current time |
| 6 | Displays the time remaining until maintenance cleaning |
| 7 | Shows the distance between the media and printhead |
| 8 | Displays the height for the currently selected media |
| 9 | Displays the Printer Status menu |
| 10 | Displays a QR code for product videos |
| 11 | Displays the maintenance settings |
| 12 | Displays the network connection status |
| 13 | Displays the status of the air suction |
| 14 | Turns the printer's interior light on or off |

Product Support

User's Guide

Windows®: Click the icon on your desktop or Apps screen to access the online *User's Guide*.

Mac: Click the icon in Applications/Epson Software/Guide to access the online *User's Guide*.

If you don't have a User's Guide icon, go to the Epson website, as described in "Epson technical support."

Epson technical support

Visit <http://epson.com/support/v1070> (U.S.), <http://epson.ca/support/v1070> (Canada), or <http://latin.epson.com/support/v1070> (Latin America) to download software and utilities, view manuals, get FAQs and troubleshooting advice, or contact Epson.

Epson provides technical support and information on the installation, configuration, and operation of professional printing products through the Epson Preferred™ Limited Warranty. Dial (888) 668-3266, 7 a.m. to 4 p.m., Pacific Time, Monday through Friday. Days and hours of support are subject to change without notice. Before you call, make sure you have your:

- Printer serial number: _____
- Proof of purchase and date: _____

Note: If you experience difficulty with the toll-free line, call (562) 276-1305.

In Latin America, see the online *User's Guide* for technical support information.

Recycling

Epson offers a recycling program for end of life hardware and ink packs. Please go to <http://epson.com/recycle> (U.S.) or <http://epson.ca/recycle> (Canada) for information on how to return your products for proper disposal.

Need Ink?

You can purchase ink from an Epson authorized reseller. To find the nearest reseller, call 800-GO-EPSON (800-463-7766).

To find the nearest reseller in Latin America, go to <http://latin.epson.com>.

SureColor V1070 replacement ink packs

Color	140 ml
● Black	T53R120
● Cyan	T53R220
● Magenta	T53R320
● Yellow	T53R420
○ White	T53RA20
Varnish	T53RV20

EPSON and SureColor are registered trademarks of Seiko Epson Corporation.

Epson Preferred is a trademark of Epson America, Inc.

Mac is a trademark of Apple Inc., registered in the U.S. and other countries.

Windows is a trademark of the Microsoft group of companies.

General Notice: Other product names used herein are for identification purposes only and may be trademarks of their respective owners. Epson disclaims any and all rights in those marks.

This information is subject to change without notice.

© 2024 Epson America, Inc., 8/24

Printed in U.S.A.

CPD-65018