

Cutting Master 4/5 Installation Issues

The CM 4 and 5 plug in is compatible with Corel Draw, and Adobe Illustrator. For Adobe Ill. Compatible with both Mac and PC.

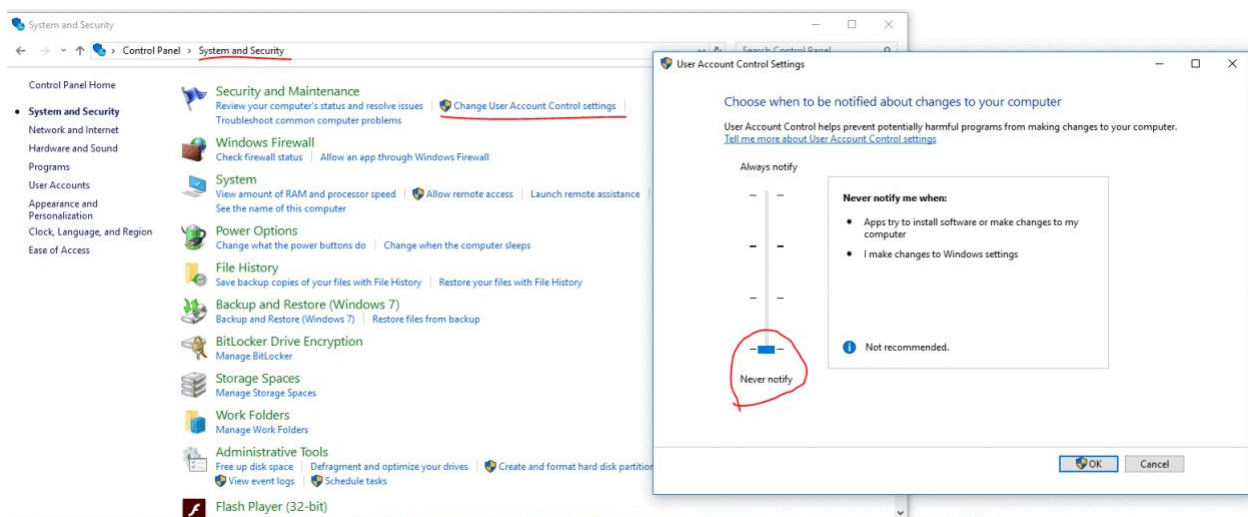
ONLY compatible with full versions of both Corel Draw, and Adobe Illustrator. It will no install in demo, student, pirated copies.

With Corel Draw, CM is only compatible as of now with subscription based version. Not with PE version (perpetual).

There are more calls about Corel Draw installation issues, mainly due to customer attempting to install on PE version. Followed by Security settings in OS. Please check the following:

-Make sure that all of your Anti-Virus and Firewalls are disabled for the installation. If they are on, this can cause certain parts of our program to be blocked during installation which it needs to communicate with Corel to work properly.

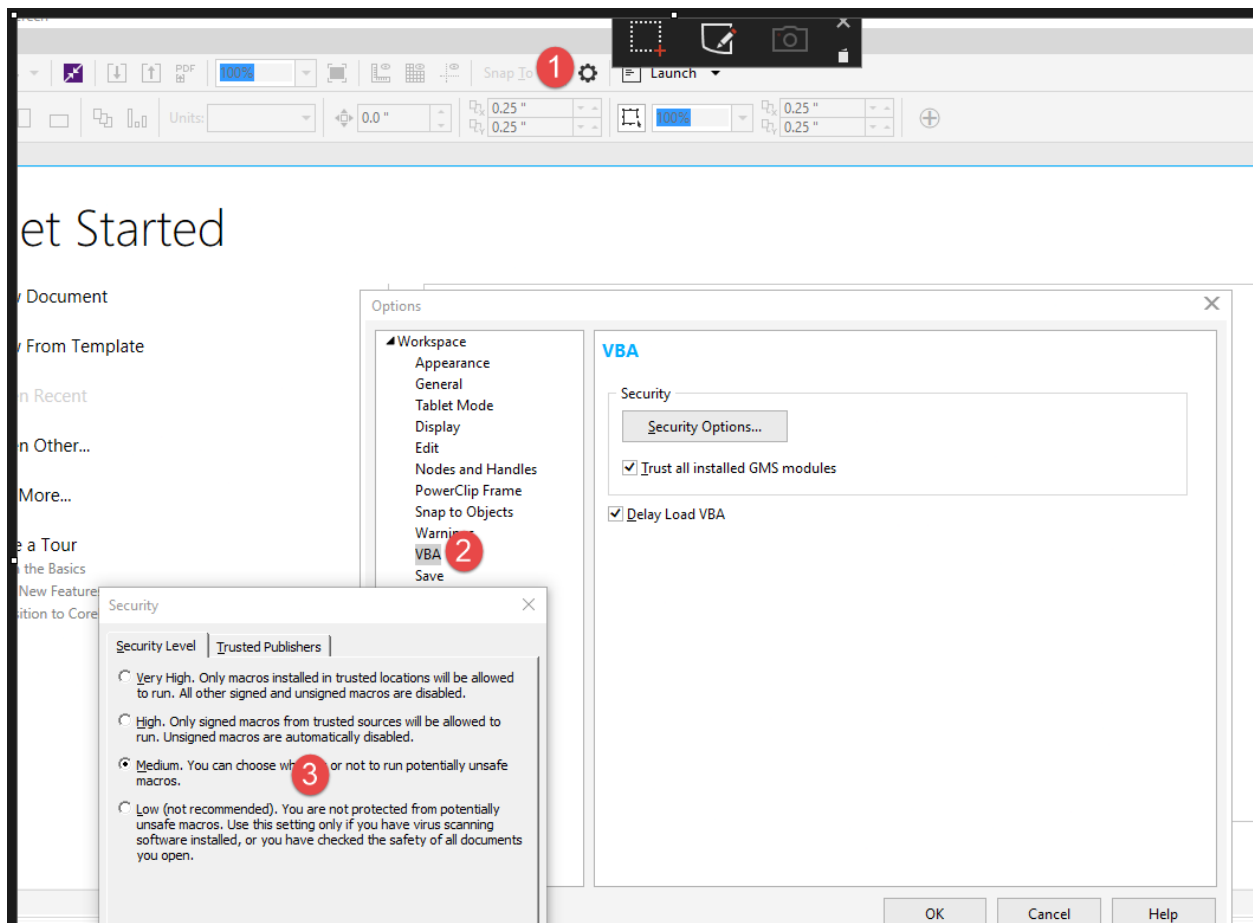
Also, go to control panel- system and security- change user account control settings and change it temporarily to never notify then reinstall Cutting master. Once you have made this change restart your computer so the setting will take effect. After the installation is complete you can restore your settings and firewall/antivirus to normal.



Try reinstalling after doing the above and this will get you full functionality. If it doesn't there is still a security setting most likely blocking complete install.

Although Corel Draw is not our software this is what we found online at their site on how to verify that Visual Basics (VBA) is installed. If this doesn't work, you may need to contact Corel Draw Technical Support.

-if you still have a problem then make sure that your VBA(visual basic application) is not too secured or not install properly, open Corel, click on the icon(1) click on VBA(2) and make sure it matches the screen below, once you do close Corel and install CM4 again.



On Mac:

Most installation issues are due to the Security and Privacy setting, make sure CM is allowed to be installed:

