

Site Preparation Document



Instructions and Sign-off

Document History:

Publication date :	Release version
1-01-20011	prerelease document
07-03-20011	version 001
08-12-2011	version 002 (remark base safety poles + minimum screen resolution)
25-04-2012	Added monophasic and change system requirements + update
10-10-2012	Changed system requirements Added requirements for router option
03-05-2012	Added requirements for POT Added no router for monophasic option
11-09-2013	Page added with information over the pneumatic connection for POT tool
17-10-2013	Clarify pneumatic air requirements
05-03-2015	Updated Windows versions and added weight info
12/09/2017	General update due to price list change
17/10/2017	Change distance safety poles
11/01/2018	Update system requirements
18/10/2018	Update compressed air requirements
17/07/2019	Update compressed air requirements
27/08/2019	Added optional conveyor extension
05/10/2020	Updated to F1612-3X

Notice

Due to continuing research and product improvements, Summa reserves the right to modify the information contained in this document at any time without prior notice. Unauthorized copying, modification, distribution or display is prohibited. All rights reserved.

Site preparation document

How to use this section

This document is divided into two sections.

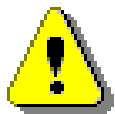
- The first section provides the information needed to prepare the physical location for the installation of the F1612. It is also helpful to help determine the internal transportation of the flatbed cutter from the customers' loading/unloading dock to its final location. It also includes all the specifications for power and other connections.
- The signature pages give information on the site the flatbed will have to be installed and on the system configuration (workflow) in which the flatbed has to be configured. All this information will facilitate the installation. There are 2 (two) signature pages that have to be filled in and then signed afterwards.



Note: Before the installation can be scheduled, the customer location must be prepared. The customer should check and mark all points in the checklist and fill in where necessary and return this document signed to the installation engineer.



Note: There is also an installation completion document. It is recommended to use this document after the flatbed is installed. Always make sure there is a copy of the document (completely filled in) for each party.



CAUTION: The amount of time the technician will spend on the site for installation is limited. Proper site preparation is crucial to the success of the installation. Any delay due to missing machinery, options, accessories, people or other installation requirements will be added to the onsite-time and will be charged supplementally.

Preparation before installing the machine

Prior to the installation of the flatbed cutter a couple of things need to be prepared in order to facilitate a smooth installation. The installation place also needs to meet certain requirements. At the end of this document, there is a checklist that must be filled in before the arrival of the machine.

Shipping, arrival, and unpacking requirements



FIG 1-1

SHIPPING CRATE – LARGE SUMMA STICKERS INDICATES FRONT OF MACHINE

- The shipping dimensions of the flatbed crate are 106" x 88" x 49" (253 cm x 223 cm x 142 cm). The crate itself should be handled with a forklift or hand pallet jack. However, a forklift is necessary to lift the machine from the pallet.
- Length of the forks should be at least 6 ft (180 cm) and a lifting capacity of at least 4400 pounds (2000 kg).
- Doorways and interior corridors to the unpacking area should at least be 90.5" (230 cm). Wider widths are needed for turning radius.
- If the machine needs to be transported inside the facilities without the crate, then the doorways should be at least 96" (243 cm) wide. The route to the installation location should be free of obstacles.
- There cannot be stairs or steps between the place where the machine is set with the forklift and where it must be placed.

- Check the figure below for dimensions of the installed machine so that the area can be required for installation.
- It is recommended to place the machine on an antistatic floor such as a solid and level concrete surface. Wood framed/constructions are not suitable for installation. The height difference over the whole installation area should be no more than 1 in (might be critical if that 1 in is where the safety poles are fixed).
- Allow extra room during installation.
- Weight of the table is 1918-1984 lbs with packaging or 1212-1279 lbs without packaging, depending on the configuration.

Floorplan

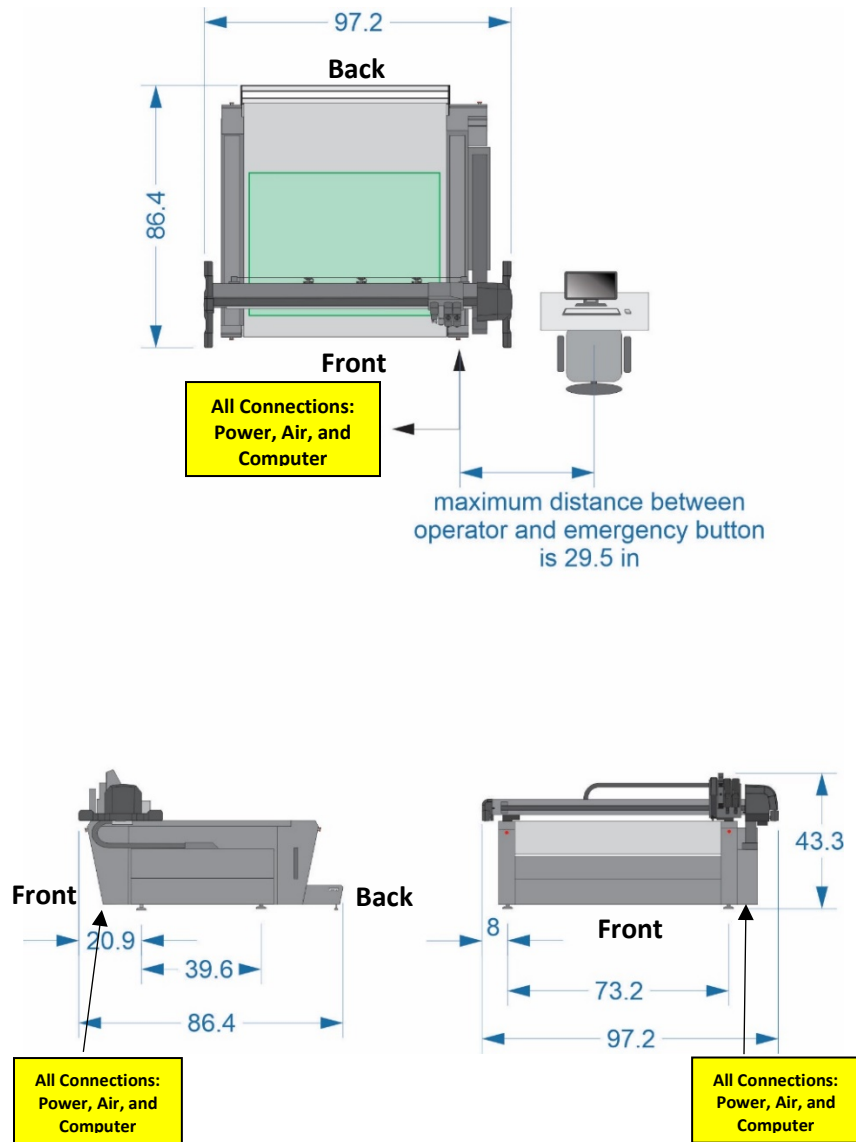
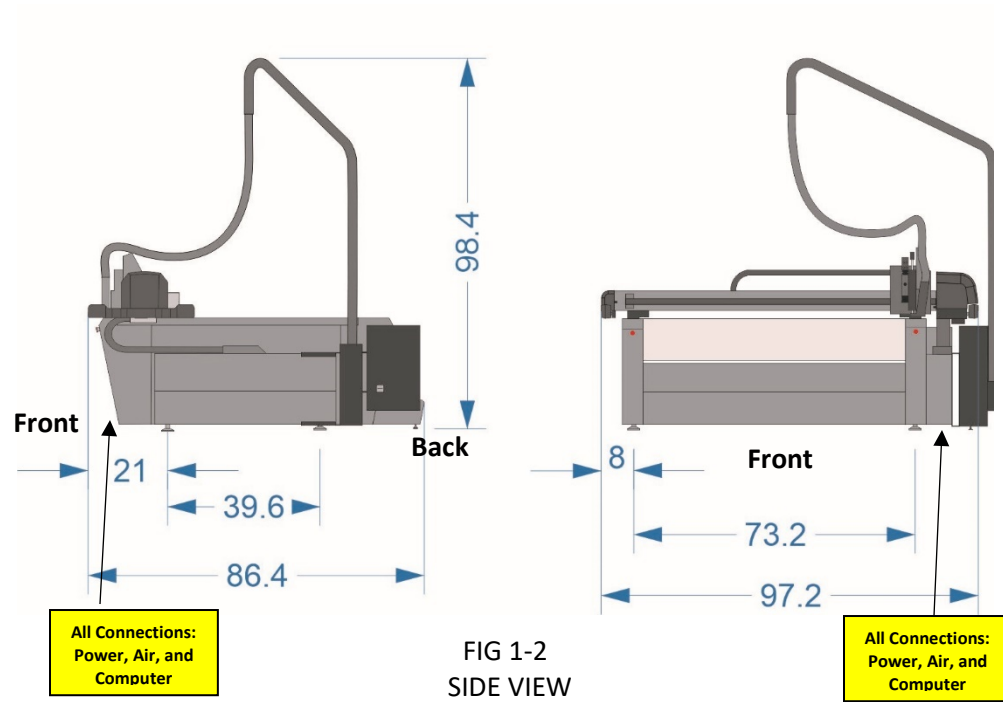


FIG 1-1
FLOORPLAN

Dimensions for the optional router system



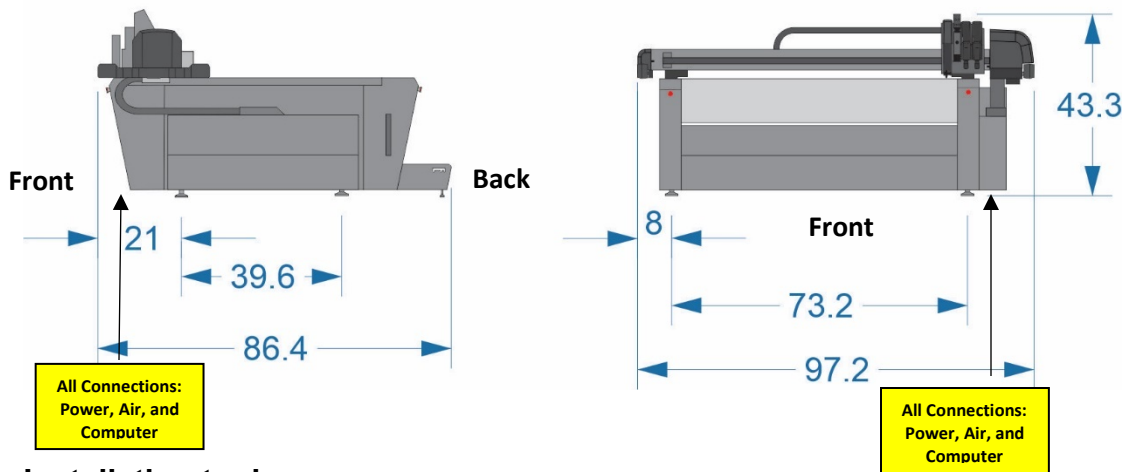
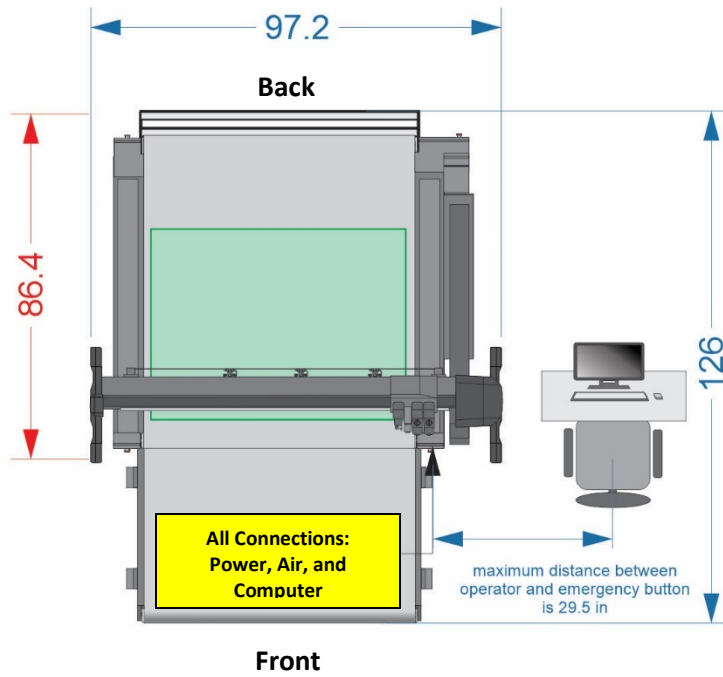
The flatbed cutter has two basic connections. One connection is optional.

- Electrical (one power cord for both vacuum pump and flatbed cutter).
- USB connection to the computer.
- Compressed air for certain options.

All routing for the cables/airline are connected around the area indicated by 'all connections' on FIG 1-2 above.

Do not forget to provide power and a network connection for the computer.

Dimensions of an F1612 with optional conveyor extension



Installation tools

Please refer to document MI9049 for a complete list of the tools, needed to install an F1612.

System requirements

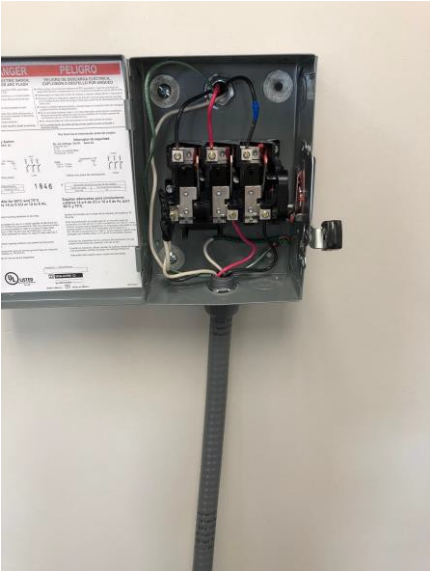
- **CPU:** An x86-32 or x86-64 compatible dual-core processor (Intel or AMD), minimum dual-core 2GHz
- **Memory:** Minimum 1GB RAM.
- **Supported operating systems:** Windows 7 (Professional, Enterprise and Ultimate), Windows 8 (Pro and Enterprise) and Windows 8.1 (Pro and Enterprise). Windows 10.
- **Hard drive:** 5400RPM or above (7200RPM preferred) minimum 500MB free, recommended 5GB. No external USB hard drive.
- **Network:** recommended to have a connection to the internet. Customer support is using TeamViewer for remote access and support over the internet.
- **Video Card:** Minimum 1200x800
- **CD/DVD:** DVD-ROM drive
- **USB:** USB 2.0 Verify that the USB host controller chipset is Microsoft certified. The F1612 is not guaranteed to operate with a USB 2.0 host driver from OWC.

Electrical connection

Power requirements: 3 phase, 5 wire! (including Summa's standard vacuum set):

- 3 x 208V + N + PE, 60Hz, max 30A
 - 208 Volt AC
 - 30 Amp
 - 3 Phase, plus Neutral & Ground (L1, L2, L3, N, G)
 - 5 Wires
 - 120 VAC Duplex outlet for computer and monitor
 - Network connection
- The flatbed cutter is delivered without a power cable for connection between the table and the wall socket. The user should provide such a cable.
- The length of the cable should be the distance between the wall socket and the power switch of the cutter plus 6 feet (2 meters).
- The cable should be 3 Phase 208V + Neutral + Ground.
- The diameter of each core should be at least AWG 10 with MTW rating for (3 x 208V).
- The overall diameter of the cable should be between 0.36" (9 mm) and 0.67" (17 mm).
- Wall socket and plug on cable should be provided by the user, as described in international standard IEC 60309.
- The connection to the main power may also be with an electric wall box.

Electrical Drop Options in Cutter Room



Disconnect Box, with conduit or portable cable



Receptacle & Plug, with portable cable

Connection at Summa Cutter



Conduit



Portable Cable

Receptacle, Plug, and Portable Cable



Leviton 2810 30 Amp, 208 Volt, 3 Phase, 4P, 5W, Flush Mounting Locking Receptacle, or equivalent



Leviton 2811 30 Amp, 208 Volt, 3 Phase, 4P, 5W, Locking Plug, or equivalent



10/5 SOOW Portable Cord 600V UL/CSA, 10 gauge wire, 5 wires



CAUTION: Be sure to check the regional electrical requirement for the type of wall socket, plug, and fuse for the wall socket or the electrical wall box.

Computer connection

The flatbed cutter is delivered with a 10 ft USB cable and a 1.5 ft extension USB cable for connection between the flatbed and the computer. These cables should be used to connect the cutter to the computer directly without the use of hubs (powered or not) or extension cables (self-powered or not). The computer should have at least 4 free USB connections.

Pneumatic connection

For machines without pneumatic tools, a 7 bar (100 PSI) @ 20 l/min (0.7cfm) compressed air supply is required.

For the POT option, a 7 bar (100 PSI) @ 350 l/min (12.4cfm) compressed air supply is required. The air quality should be clean and dry and filtered to 15 microns (Class 4 ISO 8573-1), which usually means that it is necessary to install a compressed air dryer.

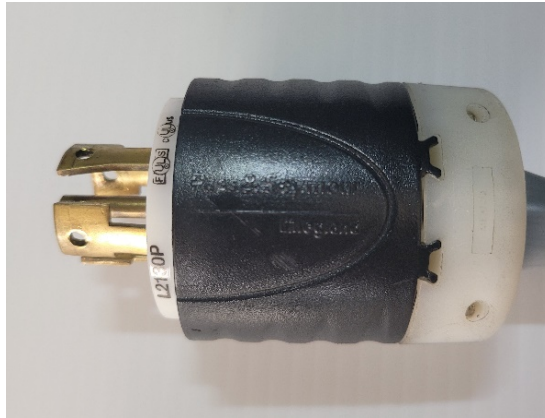
The flatbed is delivered with an 6mm diameter plastic tube to connect with a source of compressed air. The user should provide the parts for connection.

The length of the tube should be the distance between the wall socket and the power switch of the cutter plus 6 ft (2 meters).

The connection to the tube should be a quick release pneumatic fitting for metric tubes with a diameter 6 mm.

Pictures to help and determine which connectors to provide

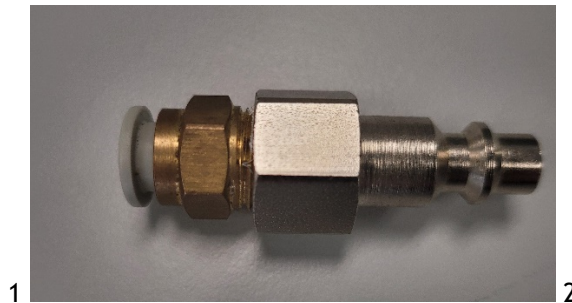
Electrical connector



Size and color of connector may differ

Search for tips: type 'IEC60309 connector' in search engine

Pneumatic connector



Side 1 is for connection to the table. Side 2 is for connection to existing installation



Note: Side 1 is mandatory. This will be connected to the 6mm diameter tube that comes out of the table.

Search for tips: type 'quick release pneumatic fitting for metric tubes' in search engine.

Requirements for router option

The router is an option that needs to be installed by a technician. It involves both mechanical and electrical changes to the table.

Minimum firmware and program revisions:

- Firmware table: 010 (MD9973) with Summa Flatbed Tools: 1.6
- GoProduce 1.0

Currently Summa offers one vacuum option: Delphin DM3 EL

Signature pages

This document consists of two parts.

First, a checklist that has to be completed.
Then some extra info that has to be filled in.

Fill in the checklist and the extra information.



CAUTION: The amount of time the engineer will spend on the site for installation is limited. Proper site preparation is crucial to the success of the installation. Any significant delay due to missing machinery, options, accessories, people or other installation requirements will be added to the onsite-time and will be charged supplemental.

Certification pages:

I certify that all site preparation tasks have been completed and the necessary parts/ tools and people will be available during training. This document consists of two pages.

Make sure all items, conditions and persons in the following checklist are available and fill in the extra info.

Company name:

Name:

Signed:

.....

Date

If this is complete (both pages), fax it back or scan and mail it to the installation technician.

Checklist

- The delivery truck can unload the crate and crate can be moved inside.
- A suitable forklift is available for lifting cutter from the crate (lifting capacity 4400 lbs, fork length min 6 ft). A hand pallet jack with the same specifications can also be used to move the crate and machine, but a forklift is necessary to lift the machine from the bottom plate of the crate.
- Additional people are available when needed to unpack (4 for lifting top of crate) and set up the cutter (2 people further on).
- The path from the unloading location to the installation location is free of any obstacles (steps, stairs, radiators,..) and doorways are wide enough.
- The floor where the machine must be installed meets the requirements. Additional requirements for the safety poles: choose one of the two options below.
 - The safety poles can be fixed to the floor.
 - The safety poles cannot be fixed to the floor, but the extra base plates were ordered.
- The main power connection or the parts to connect to the main power are available. A person with knowledge of the local requirements for electrical installation is available or has prepared the connection.
 - 3 phasic power supply and type:
- The compressed air connection or the parts to connect to compressed air are available.
- The environment complies with the requirements for operating the machine.
- The installation area is easily accessible and free of debris. It is recommended for the installation area to be marked on the floor.
- A PC is pre-installed (Windows and internet connection) and ready for use and installation of the programs delivered with the cutter. The PC should have 4 free USB connectors.
- Future operator is available during installation and the entire time allocated for training.

Extra info

Used programs for designing and ripping:

- Operating system:
- Design program:
- RIP:

Extra info or requests:

.....
.....